

Unit 3-1 Notes: Skeletal System

Skeletal System: Bones

Functions:

1.

2.

3.

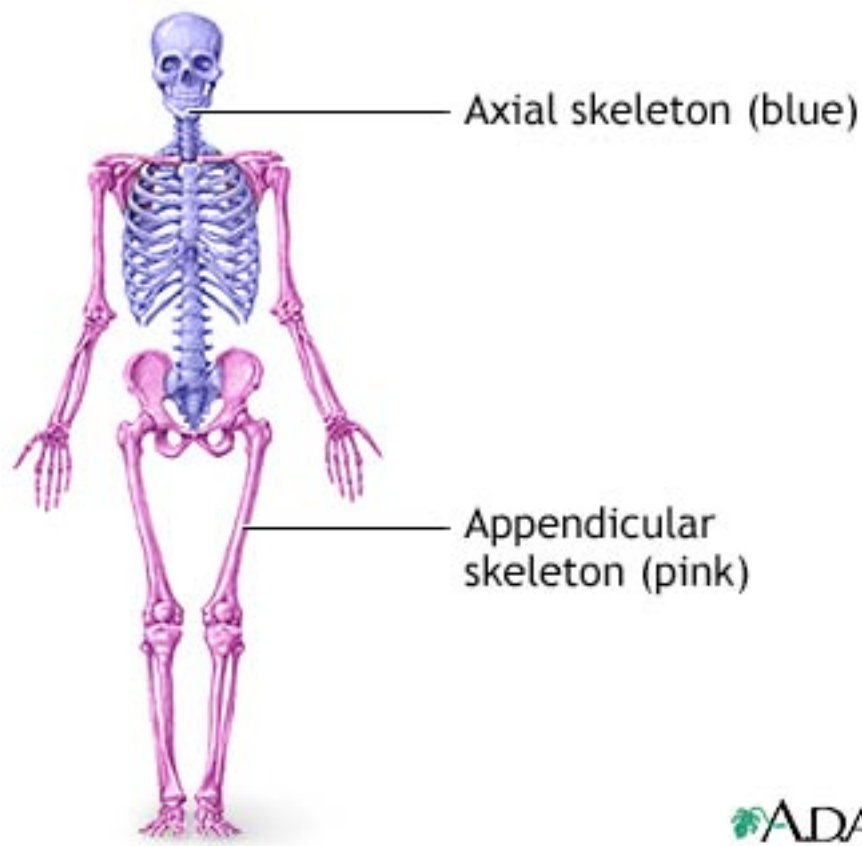
4.

5.

Skeleton can be divided into 2 major categories:

1. Axial Skeleton

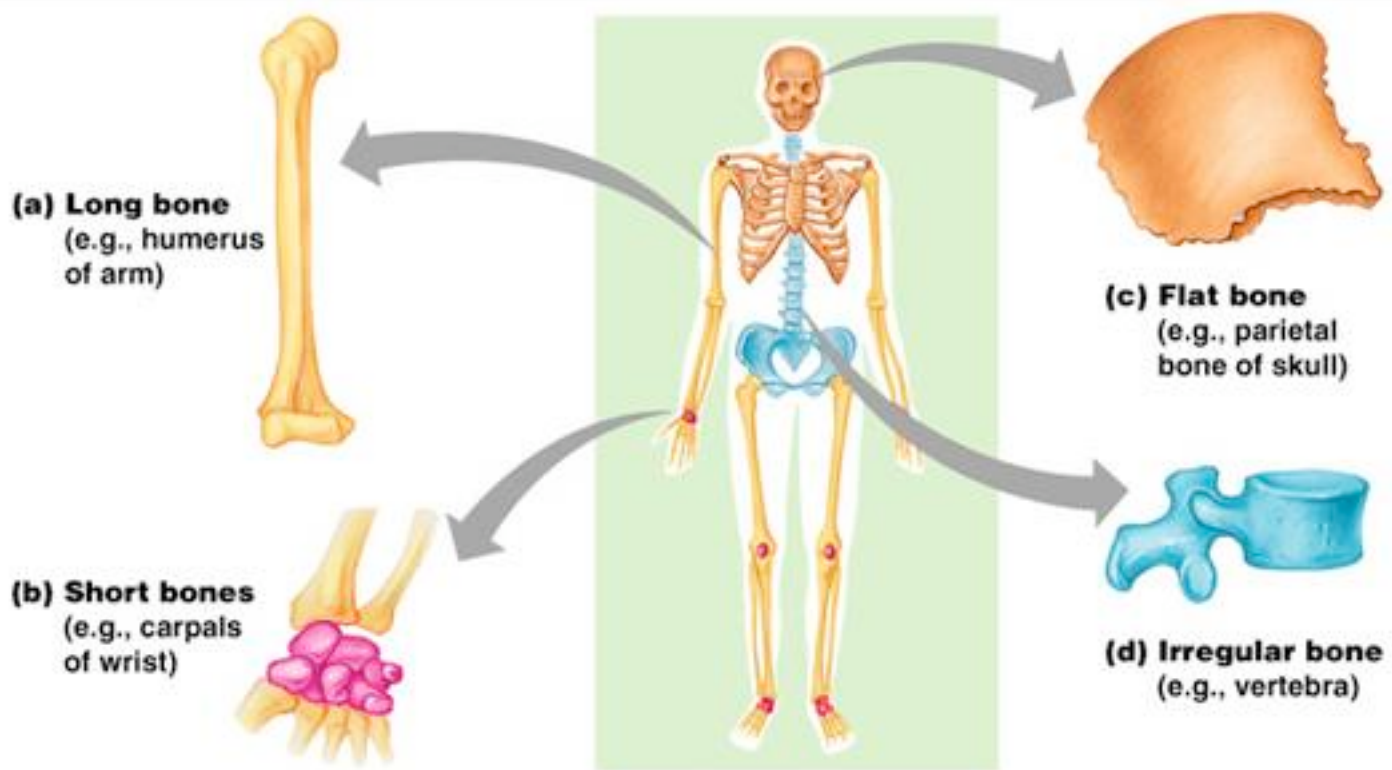
2. Appendicular Skeleton



***Skeletal system also includes joints, cartilage, and ligaments

Shapes of Bones:

1. Long Bone
2. Short Bone
3. Flat Bone
4. Irregular Bone



Bones of the Skull:

